

INTEGRATED SOLUTION FOR THE CLEANING INDUSTRY

 amer  italsea  sir  nsm

A GLOBAL GROUP



WE DRIVE THE E-FUTURE

At our core, we are a group of innovative manufacturing companies, united by a mission to shape the future of electrification across industries. Our journey began in 1974 with **Amer**, founded by *Francesco Battistella* in Northern Italy.

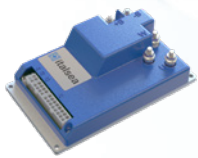
Today, this vision has evolved into a **global group** with seven manufacturing facilities across Italy, Switzerland, and Germany, supported by three strategic hubs in India, China, and the United States. Together, we are driven by a passion for delivering **custom and integrated solutions**, empowering businesses with advanced motorization and electric handling technologies.

Our expertise encompasses a broad range of products, from alternators, permanent magnet generators (PMGs), and voltage regulators to electronic drivers, AC and DC motors, traction systems, and linear motion systems.

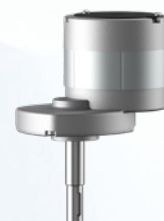
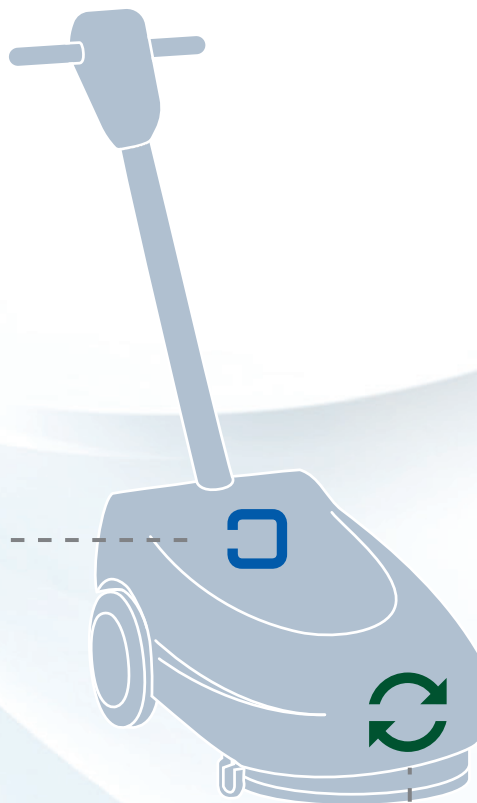




INSIDE LIGHT CLEANING MACHINE



7BL00097
**FUNCTION
CONTROL**

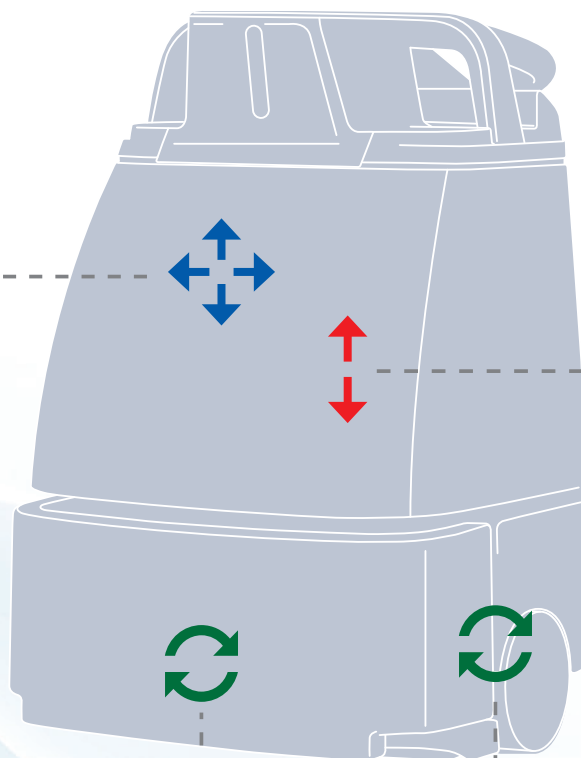


MRP17-BL65
GEAR MOTOR

INSIDE AUTONOMOUS ROBOT



7CH2D090
**TRACTION
CONTROLLER**



AO-01
**LINEAR
ACTUATOR**



MRP17-BL65
GEAR MOTOR



MRP17-BL65
DUAL DRIVE



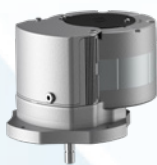
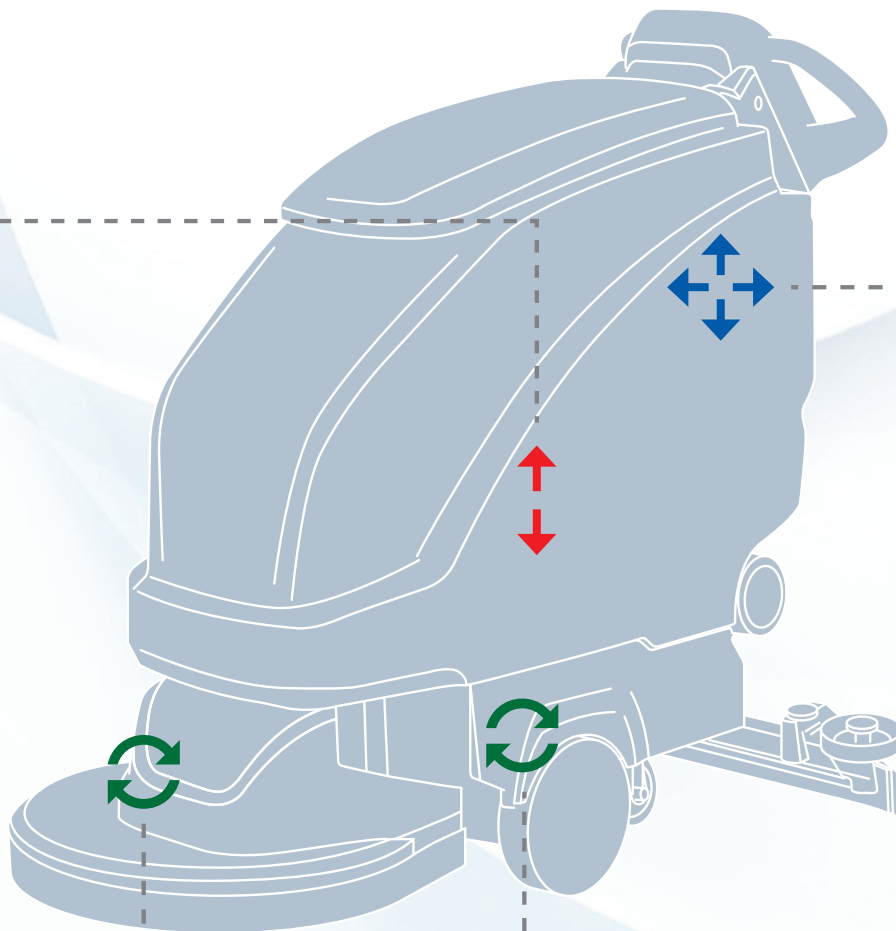
INSIDE WALK-BEHIND SCRUBBER



AOP-1/M
**LINEAR
ACTUATOR**



7CFX3000
**FUNCTIONS/
TRACTION
CONTROLLER**

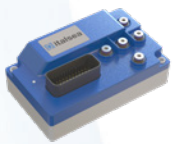


MRP15 WITH INTEGRATED
CONTROLLER
GEAR MOTOR



MRP6
DUAL DRIVE

INSIDE RIDE-ON SCRUBBER



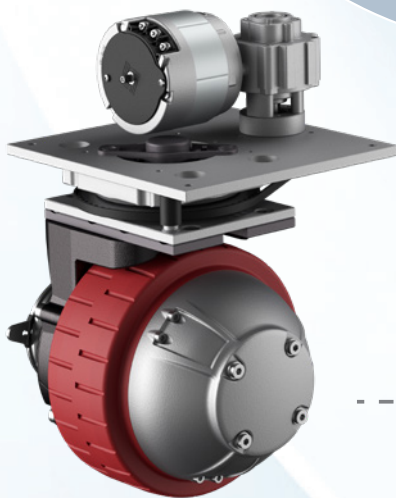
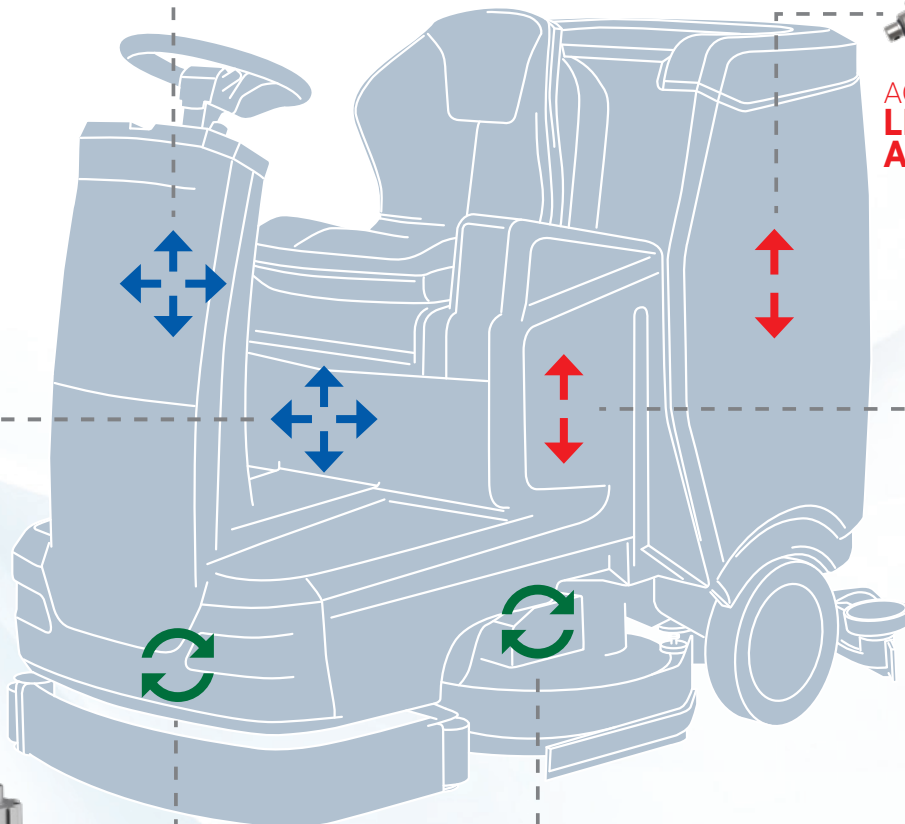
7BL00100
**TRACTION
CONTROLLER**



AO-01/M
**LINEAR
ACTUATOR**



7CH2D090
**DUAL DRIVE
CONTROLLER**



MTR11 250 - BL80
**DRIVE WHEEL
WITH STEERING SYSTEM**



MRP15-BL80
DC GEAR MOTOR



AO-1/M
**LINEAR
ACTUATOR**



INSIDE CLEANING MACHINE



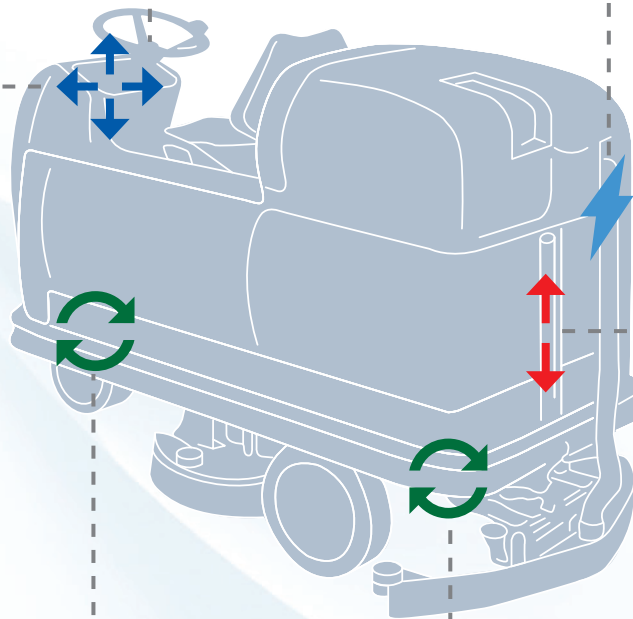
TOUCH SCREEN
**OPERATOR
INTERFACE**



PMG-DC
**PERMANENT
MAGNET
GENERATOR**



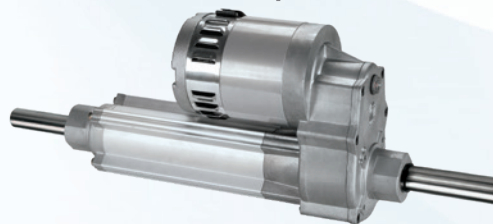
7CFX1000
**FUNCTIONS/
TRACTION
CONTROLLER**



RAMB-01
TOWING HITCH

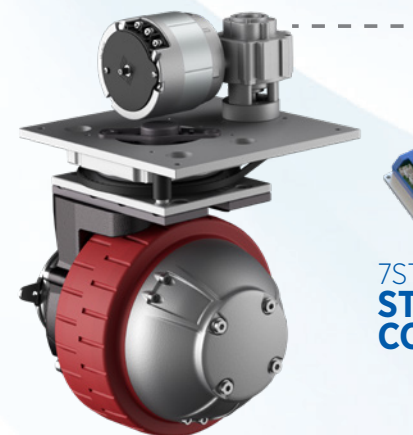


MTR11
DRIVE WHEEL



MRP9D
TRACTION SYSTEM

INSIDE SWEEPER





INSIDE AUTONOMOUS CLEANING MACHINE



MRP14
**BRUSH
GEARMOTOR**



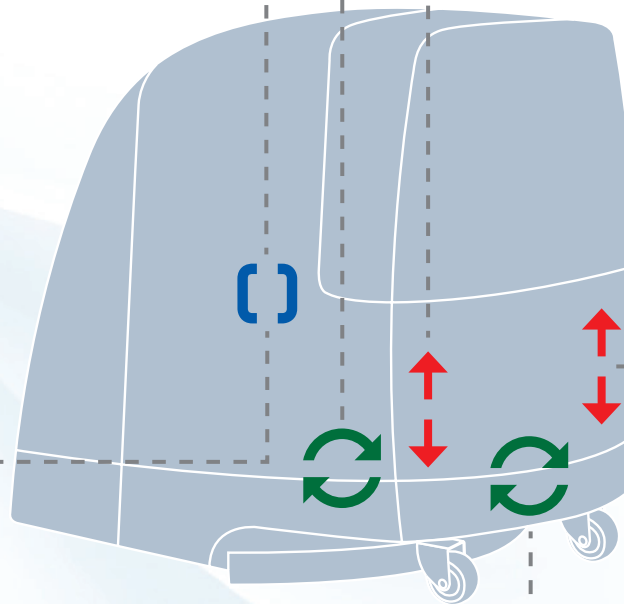
AP-3
**LINEAR
ACTUATOR**



**FUNCTION
CONTROL**



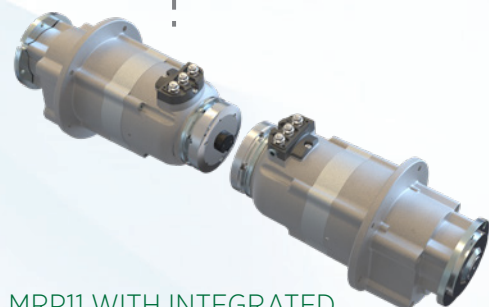
7CH4Q150
CHOPPER



AO-01M
**LINEAR
ACTUATOR**



MRP6
DUAL DRIVE

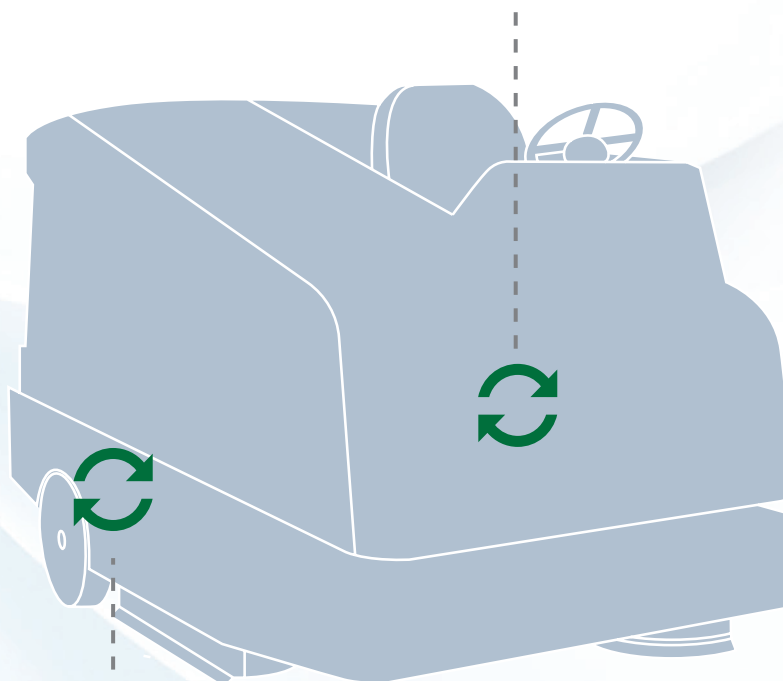


MRP11 WITH INTEGRATED
CONTROLLER
TRACTION SYSTEM

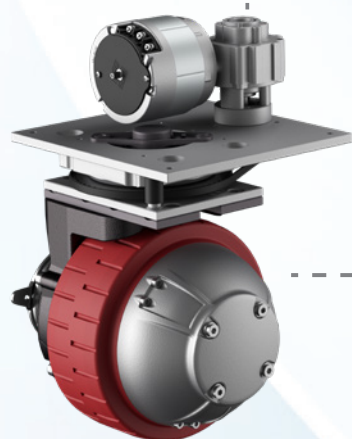
INSIDE POWER STEERING



**DC
GEAR MOTOR**



**7ST45000
STEERING
CONTROLLER**



**MTR11 250 - BL80
DRIVE WHEEL
WITH STEERING SYSTEM**





AMER S.p.A. Via Maestri del Lavoro, 1
36078 Valdagno | Vicenza | Italia

T +39 0445 400200
F +39 0445 431237

amer@amer.it
amer.it

